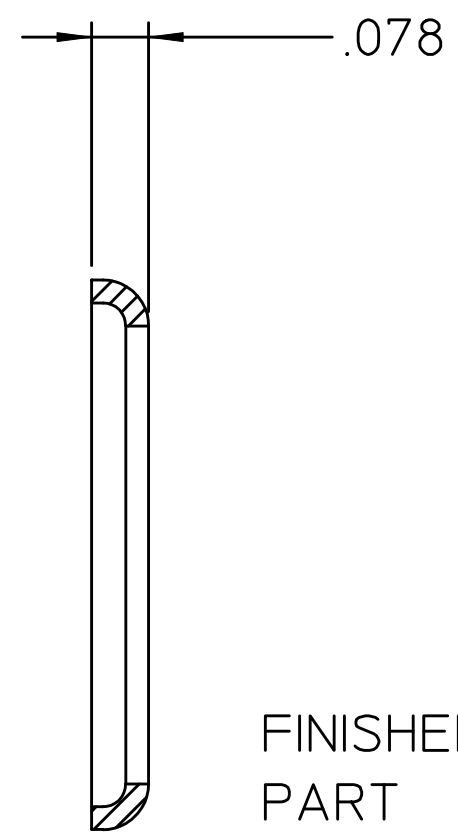
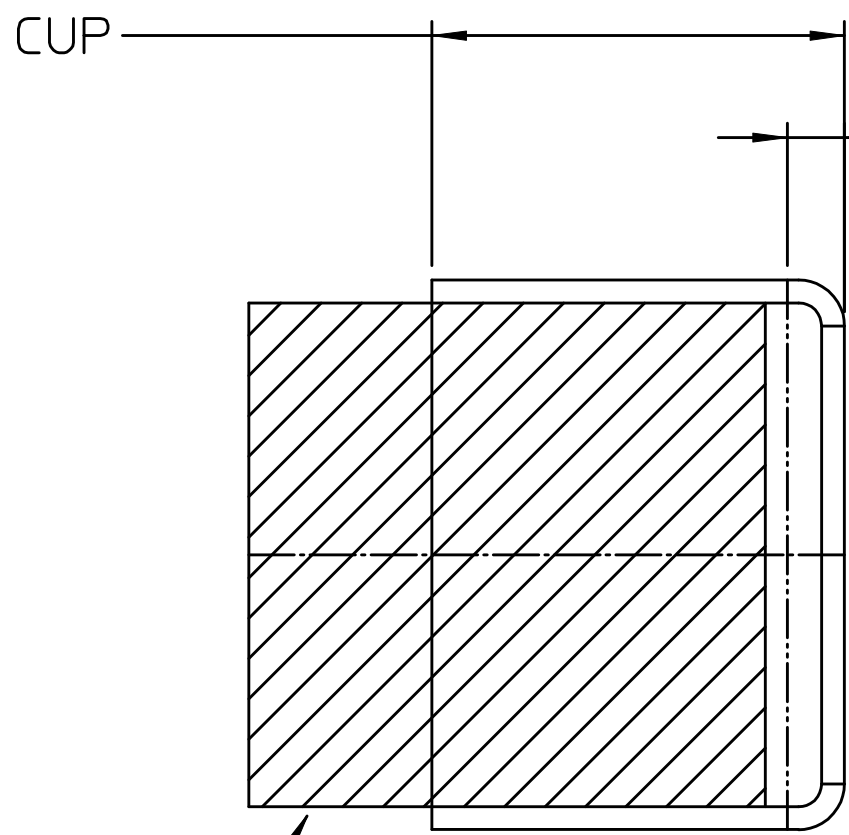


Disclaimer: The successful conversion of purchased nickle silver cups into visually and technically acceptable rod/reel seat components requires personal technical skill in machine operation, knowledge of strength of material issues and of general manufacturing technology. The supplier makes no guarantee that any individual can successfully do so and is specifically not responsible for any injury or damage that may come about as a result of machining or finishing or attempting to machine or finish purchased cups. Machining metal is inherently dangerous.

REV	DATE	DESCRIPTION	DWN	APP
A	6/14/01	NEW DRAWING	GPD	
B	8/30/01	SHT 2 ADDED FOR BSRC SHOP USE	GPD	



FINISHED PART



.078 CHECK PARTING OFF DIMENSION


DRILL / BORE TO SUIT
SEE NOTE 2

STEEL SUPPORT FOR CHUCKING
(NOT NEEDED IF COLLETED)

NOTES:

1. ALWAYS USE SAFETY GLASSES WHEN OPERATING POWER TOOLS.
2. HOLE TO BE .005 LARGER THAN INSERT.

THIS DOCUMENT AND THE INFORMATION CONTAINED HEREIN IS THE PROPERTY OF G.P. DABROWSKI, D.B.A. BROOKSIDE ROD CO. IT IS CONSIDERED TO BE PROPRIETARY AND MAY NOT BE USED FOR ANY PURPOSE WITHOUT WRITTEN PERMISSION.

POSITIONAL AND FORM SPECIFICATIONS IN ACCORDANCE WITH ANSI Y14.5M REV 1988		 37 BROOK STREET, NAUGATUCK, CT. 06770-3101	
UNLESS OTHERWISE SPECIFIED			
DIMENSIONS ARE:		DRAWN: G. DABROWSKI	DATE: 6/14/01
DECIMAL TOLERANCES	XX: .010 XXX: .005	CHECKED:	APPROVED:
ANGLES	BASIC	DESCRIPTION: CORK CHECK MACHINING	
FILLET/EDGE	.015	SCALE: 4:1	DRAWING No. 010614
SURFACE FINISH RMS	✓		REV. B
LAST DATUM USED	A		
METL ENGR/DATE:			
MFG ENGR/DATE:			
QA ENGR/DATE:			

SHEET 1 OF 2

