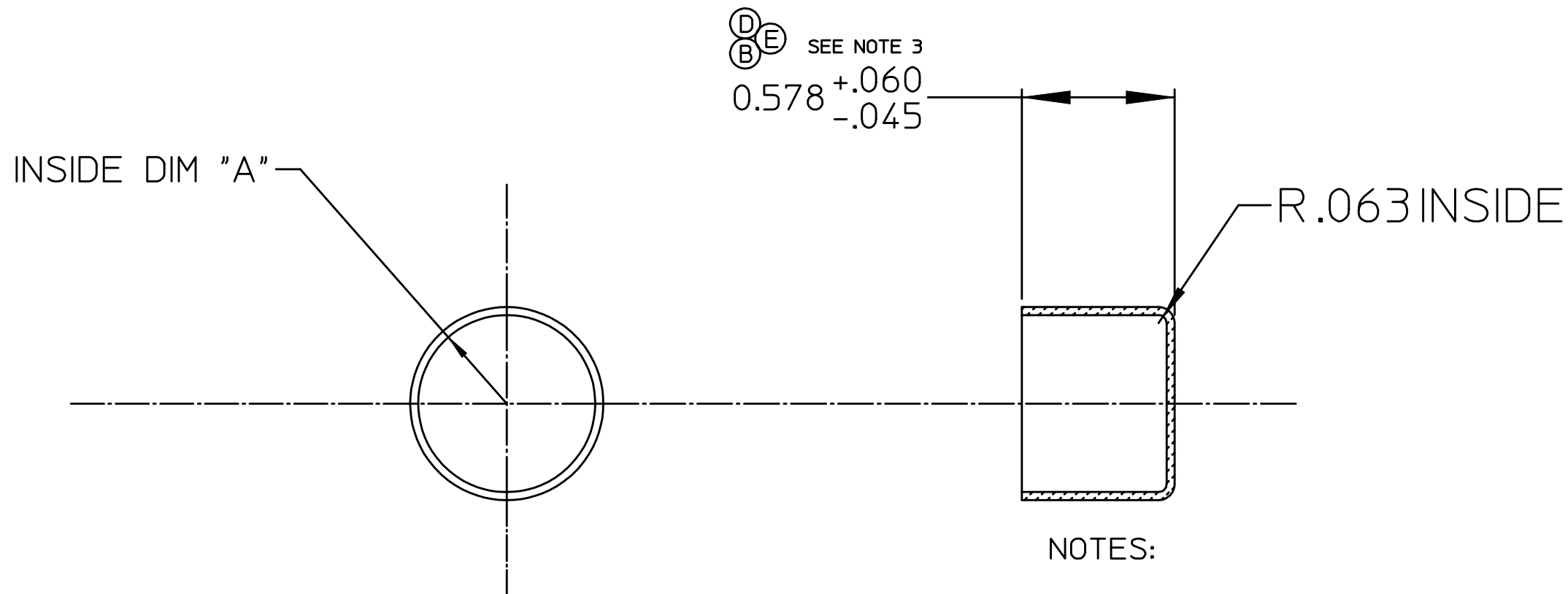


3. THE HEIGHT DIMENSION OF 3/4 INCH CUPS IS +/- .094 INCH.

NOTES CONTINUED:

REV	DATE	DESCRIPTION	DWN	APP
A	6/19/00	NEW DRAWING	GPD	
B	6/11/00	.625 WAS .593	GPD	
C	8/22/01	ADDED CR3, CR4.	GPD	
D	3/25/03	REVISED HEIGHT	GPD	
E	4/15/03	ADDED 3/4 IN. CUP & TOLERANCE	GPD	




NOTES:

1. MATERIAL: NICKEL SILVER 65-18 PER UNS C75200. THICKNESS .031 BEFORE FORMING.
2. FOLDS, CREASES OR SCRATCHES DEEPER THAN .010 ARE NOT PERMITTED.

PART NUMBER	DESCRIPTION	DIMENSION "A"
000619-CR1	11/16 ID REF	DIA .685 +/- .004
000619-CR2	5/8 ID REF	DIA .620 +/- .004
000619-CR3	21/32 ID REF	DIA .656 +/- .004
000619-CR4	23/32 ID REF	DIA .718 +/- .004
000619-CR5	3/4 ID REF	DIA .756 +/- .004

SEE NOTE 3

THIS DOCUMENT AND THE INFORMATION CONTAINED HEREIN IS THE PROPERTY OF G.P. DABROWSKI, D.B.A. BROOKSIDE ROD CO. IT IS CONSIDERED TO BE PROPRIETARY AND MAY NOT BE USED FOR ANY PURPOSE WITHOUT WRITTEN PERMISSION.

POSITIONAL AND FORM SPECIFICATIONS IN ACCORDANCE WITH ANSI Y14.5M REV 1988		 37 BROOK STREET, NAUGATUCK, CT. 06770-3101	
UNLESS OTHERWISE SPECIFIED			
DIMENSIONS ARE:		DRAWN: G. DABROWSKI	DATE: 6/19/00
DECIMAL TOLERANCES	XX: .010 XXX: .005	CHECKED:	APPROVED:
ANGLES	BASIC	DESCRIPTION: BLANK: BUTT CAPS	
FILLET/EDGE	.015	SHEET 1 OF 1	
SURFACE FINISH RMS	✓	SCALE: 2:1	
LAST DATUM USED	A	DRAWING No. 000619	
METL ENGR/DATE:		REV. E	
MFG ENGR/DATE:			
QA ENGR/DATE:			